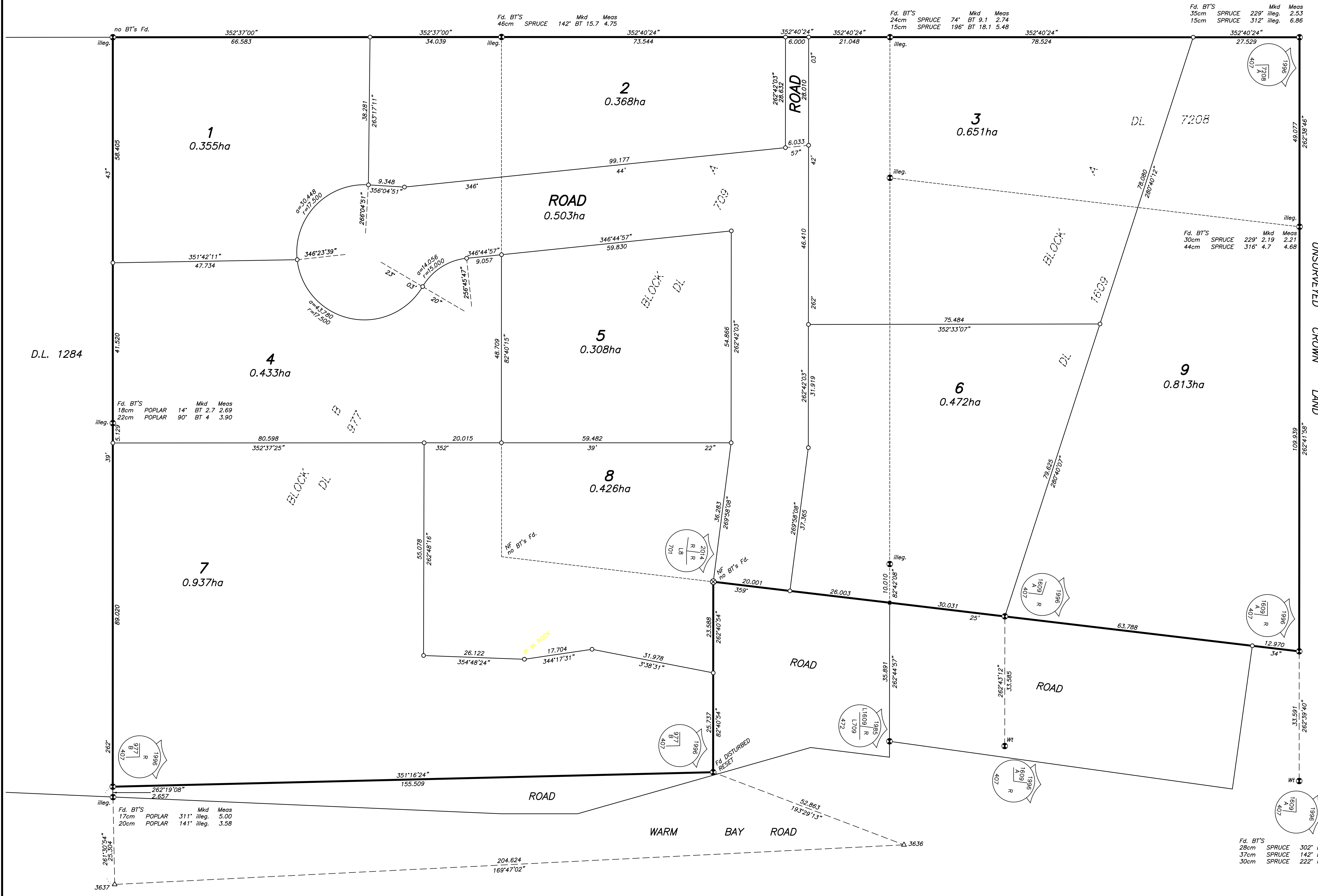
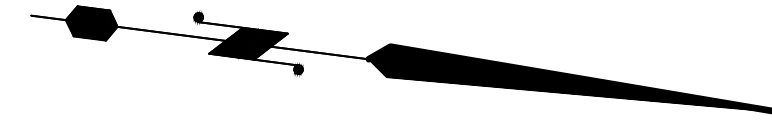


UNSURVEYED CROWN LAND



**SUBDIVISION PLAN OF  
BLOCK A OF DISTRICT LOTS 7208  
AND 1609, BLOCK A OF DISTRICT LOT  
709, AND BLOCK B OF DISTRICT LOTS  
709 AND 977  
CASSIAR DISTRICT**  
PURSUANT TO SECTION 67 OF THE LAND TITLE ACT  
BCGS 104 N.052

UTM COORDINATES  
NAD83(CSRS), ZONE 8, 135° WEST

STATION	NORTHING	EASTING	ORTHOMETRIC ELEVATION	COMBINED SCALE FACTOR
3636	6599557.31	576654.09	732.945	0.999557
3637	6599356.02	576690.36	734.503	0.999557
987009	6606396.20	572588.64	792.677	0.999541



THE INTENDED PLOT SIZE OF THIS PLAN IS 560mm IN WIDTH  
BY 864mm IN HEIGHT (SHEET SIZE D) WHEN PLOTTED AT  
A SCALE OF 1:500

THIS PLAN SHOWS HORIZONTAL GROUND-LEVEL DISTANCES UNLESS OTHERWISE SPECIFIED  
TO COMPUTE GRID DISTANCES, MULTIPLY THE GROUND-LEVEL DISTANCES BY THE AVERAGE  
COMBINED FACTOR OF 0.999557 WHICH HAS BEEN DERIVED FROM  
STATIONS 3636 AND 3637

BEARINGS TO BEARING TREES ARE MAGNETIC

GRID BEARINGS ARE DERIVED FROM A LEAST SQUARES ADJUSTMENT OF GPS OBSERVATIONS  
HOLDING NAD83(CSRS) VALUES OF GEODETIC CONTROL MONUMENT 987009 FIXED IN 3D  
AND ARE REFERRED TO THE CENTRAL MERIDIAN OF UTM ZONE 8 (135°W).

THE FIELD SURVEY REPRESENTED BY THIS PLAN WAS COMPLETED BY  
G.C. FRIESEN, BCLS ON THE 14TH DAY OF MARCH, 2014

THIS PLAN LIES WITHIN THE STIKINE REGION

LEGEND :

FOUND	PLACED	DESCRIPTION
●	⊗	STANDARD CAPPED POST
○	○	STANDARD IRON POST
△	△	TRAVERSE HUB PLACED

THIS PLAN LIES WITHIN THE JURISDICTION OF THE  
APPROVING OFFICER FOR THE MINISTRY OF  
TRANSPORTATION AND INFRASTRUCTURE  
(MOTI FILE No: 2013-03612)

THE REGISTERED OWNERS DESIGNATED HEREON DECLARES THAT THEY  
HAVE ENTERED INTO A COVENANT IN FAVOUR OF THE CROWN  
IN RIGHT OF BRITISH COLUMBIA, c/o THE MINISTRY OF TRANSPORTATION  
UNDER SECTION 219 OF THE LAND TITLE ACT

Fd. BT'S	Mkd	Meas
28cm SPRUCE	302' BT	2.57 2.57
37cm SPRUCE	142' BT	6.11 6.08
30cm SPRUCE	222' illeg.	6.38

D.L. 1284